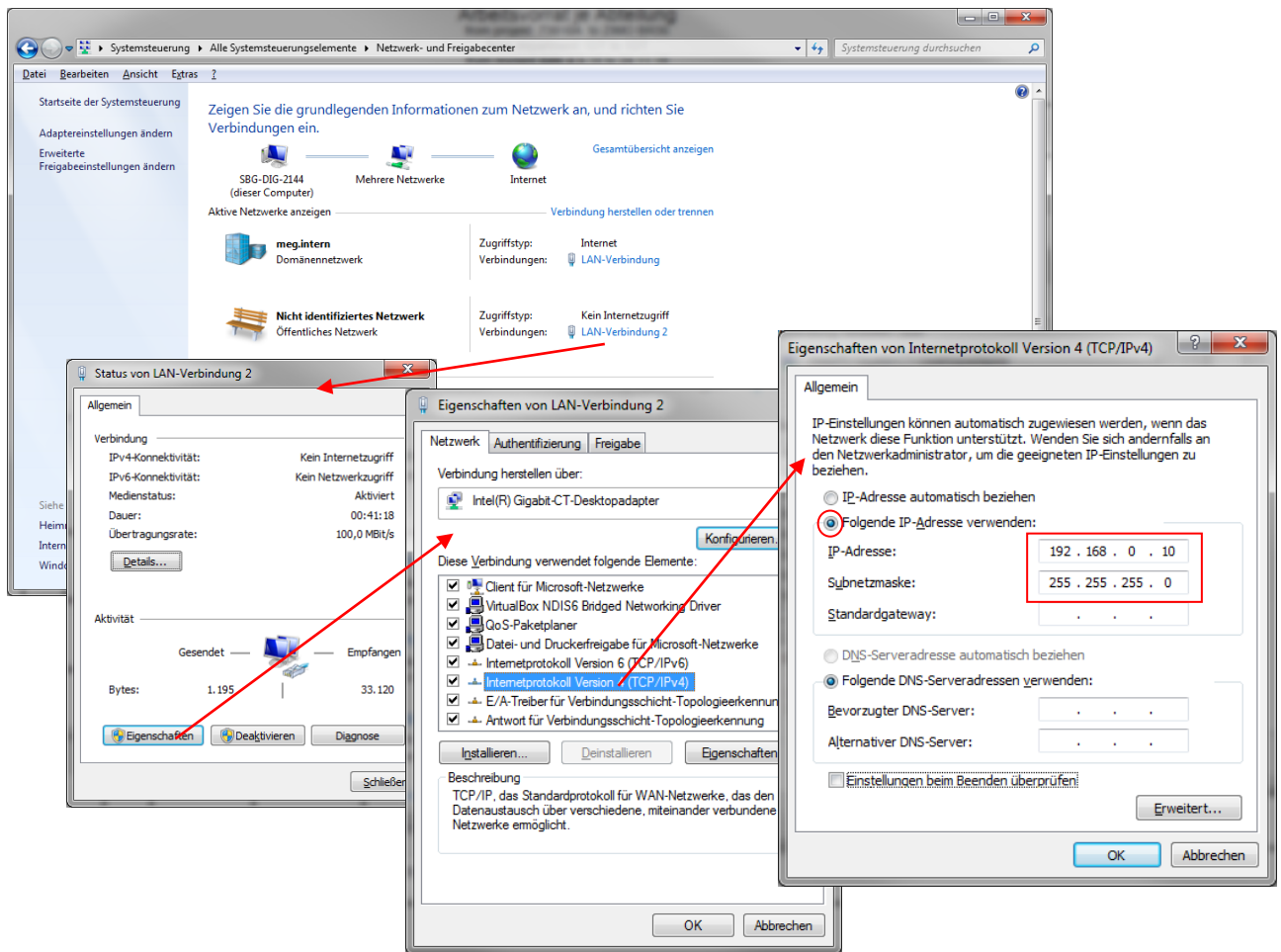


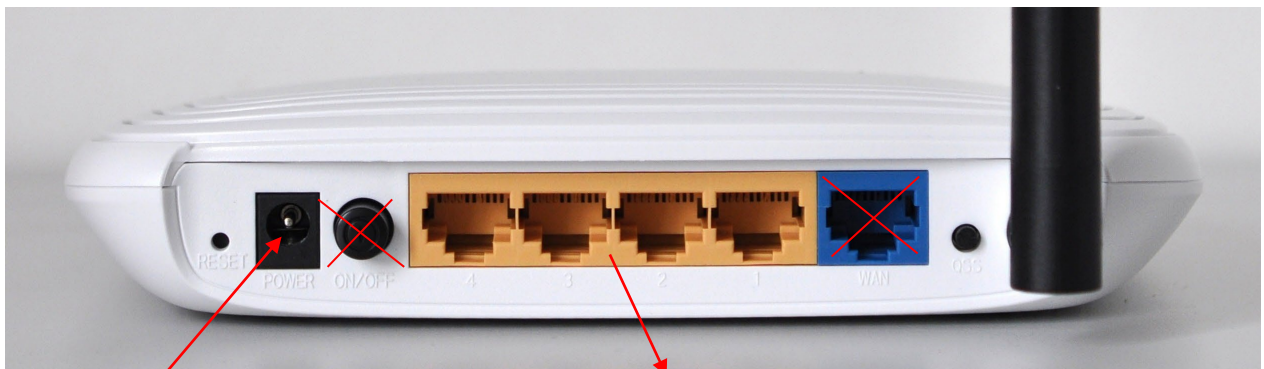
Z21-Router Konfiguration

(Model No.: TL-WR841N)

1. PC ETH-Einstellen:



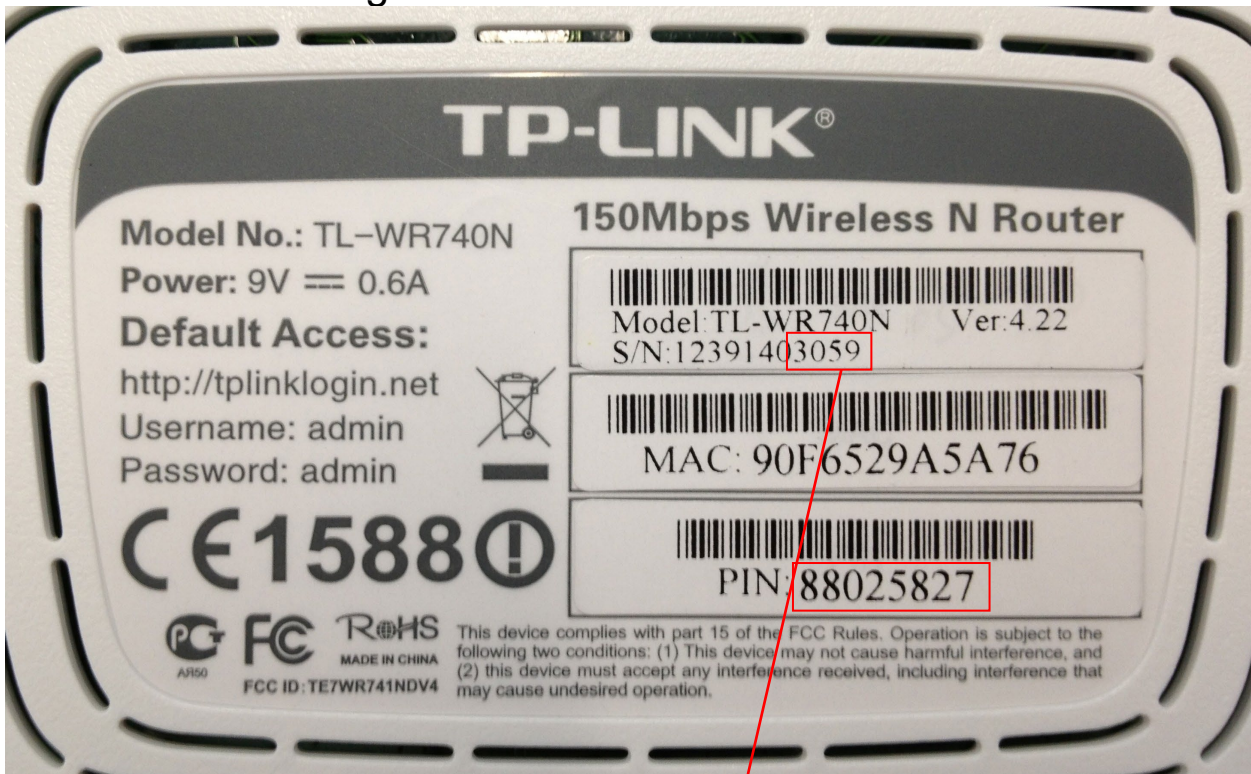
2. Verbindung zum PC:



Netzteile

Verbindung zum PC

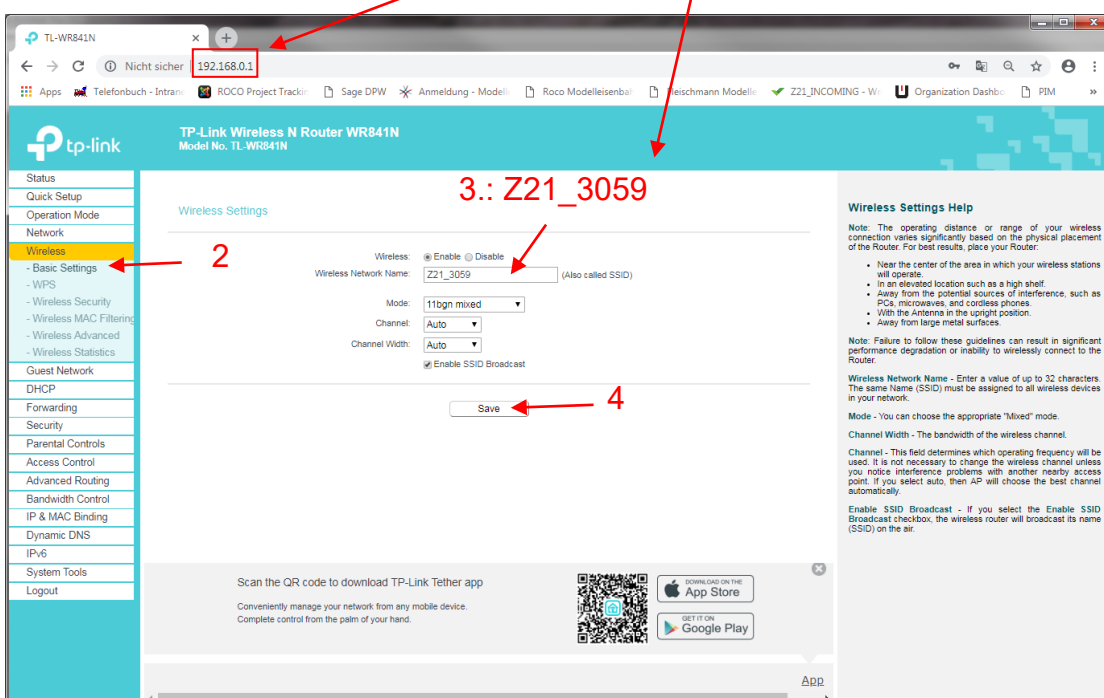
3. Am Router Konfigurieren:



Anmelden und SSID:

User: admin
 Passwort: admin

1. Adressleiste: 192.168.0.1



Z21-Router Konfiguration

The screenshot shows the configuration page for the TP-Link Wireless N Router WR841N. The 'Wireless' section is active, and the 'WPA/WPA2 - Personal (Recommended)' option is selected. Red arrows and numbers indicate the following steps:

1. Click on the 'Wireless' menu item in the left sidebar.
2. Click on the radio button for 'WPA/WPA2 - Personal (Recommended)'.
3. Enter the PIN '88025827' in the 'Wireless Password' field.
4. Click the 'Save' button at the bottom of the configuration area.

Additional details visible in the screenshot include the 'Wireless Security Help' sidebar on the right, which provides information about security options like WPA/WPA2-Enterprise, WEP, and WPA/WPA2-EnterpriseVersion. The 'Save' button is highlighted with a red arrow and the number 4.

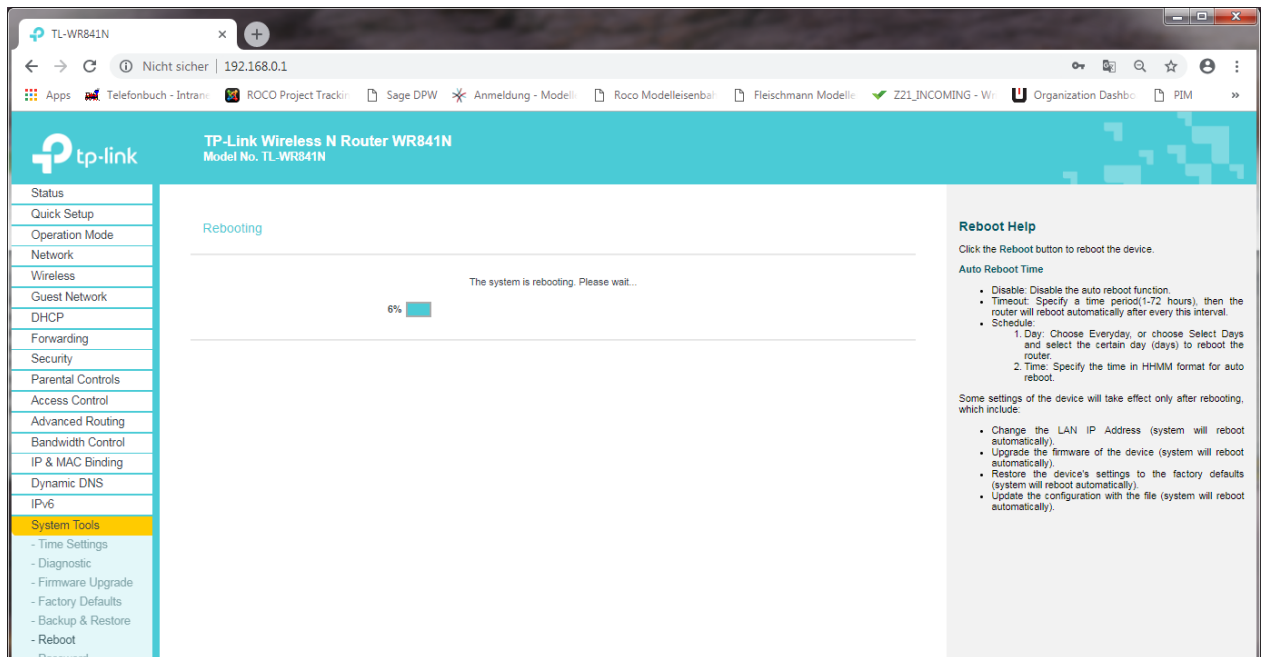
The screenshot shows the 'System Reboot' configuration page. A dialog box is displayed in the center, asking for confirmation to reboot the device. Red arrows and numbers indicate the following steps:

1. Click on the 'Reboot' button in the left sidebar.
2. Click the 'Reboot' button on the main configuration page.
3. Click the 'OK' button in the confirmation dialog box.

The dialog box text reads: 'Auf 192.168.0.1 wird Folgendes angezeigt: The device will reboot. Are you sure to continue?'. The 'Reboot' button is highlighted with a red arrow and the number 2, and the 'OK' button in the dialog is highlighted with a red arrow and the number 3.

Z21-Router Konfiguration

Warten:



Wenn nach ca. 20-30sec das nachfolgende Bild angezeigt wird, war die Konfiguration erfolgreich:

